



# Digital Processing Services Connection Guide

Version v0.4

07 May 2024

## Table of contents

1	Change Control .....	3
2	Introduction .....	4
2.1	Background .....	4
3	Connection channels .....	5
3.1	SFTP .....	5
3.1.1	Folder structure.....	5
3.1.2	Connection guide.....	6
3.2	ACORD DRI.....	7
3.2.1	Connection guide.....	7
3.3	Writeback.....	10
3.3.1	Connection guide.....	10
	Appendix A - Subfolders for EDI .....	13
	Appendix B - Transferring file using a Windows FTP tool (WinSCP) .....	15

# 1 Change Control

<b>Version No.</b>	<b>Date Issued</b>	<b>Amendment Summary</b>
0.1	23 <sup>rd</sup> Feb 2024	Initial version
0.2	** Mar 2024	Updates made: to be added <ul style="list-style-type: none"><li>• Appendix A - corrected folder list</li></ul>
03	April 2024	Updates made: to be added <ul style="list-style-type: none"><li>• Appendix A - corrected folder list</li></ul>
04	April 2024	Updates made : to be added <ul style="list-style-type: none"><li>• "Password" : Amended the text for clarity</li><li>• Passphrase : removed the ppk reference</li><li>• Added IPs for inbound traffic to BP2 for DRI/Writeback</li></ul>

## 2 Introduction

### 2.1 Background

Velonetic require a connection guide so they can update their onboarding documentation to support the new Digital Processing Services. This document provides high-level connection information. This document is draft and subject to change.

## 3 Connection channels

Velonetic's Digital Processing Services supports a variety of interfaces. For Phase 1, the interfaces supported are SFTP, DRI, and Writeback.

### 3.1 SFTP

Velonetic customers (and their respective vendors) that are Insurers, Reinsurers, MGAs, Managing Agents, Brokers and Service Companies to poll and fetch, and post files related to premiums, claims, and settlements.

Depending on Velonetic customer, files could include the following types:

- EDI (in various technical formats depending on Velonetic customer's requirement for standard or bespoke features required, including ACORD4All)
- CWT (Claims Workflow Triggers)

#### 3.1.1 Folder structure

##### EDI

The folder structure is based on the customer's Market Group Reference supplied during the Velonetic onboarding process. The Market Group Reference contains both an Account and User element.

- /<Account>/<User>/Inbound/<FolderType> - Contains files delivered by Velonetic client to the Digital Processing Services
- /<Account>/<User>/Outbound/<FolderType> - Contain files delivered to Velonetic client from the Digital Processing Services

Account - Refer to User portion of the Market Group Reference supplied during the Velonetic onboarding process.

User - Refer to User portion of the Market Group Reference supplied during the Velonetic onboarding process

FolderType - Refer to Appendix A

##### CWT

The folder structure is based on the customer's Market Id supplied during the Velonetic onboarding process.

- /<Market Id>/CWT - Contain files delivered to Velonetic client from the Digital Processing Services

Market Id - Refer to Market Id supplied during the Velonetic onboarding process.

## 3.1.2 Connection guide

Environment - Beta (used for customer testing, including Vanguard, LIMOSS coordinated and enhanced customer testing)

SFTP Settings	Value
File protocol:	SFTP
Port number:	22
Host name:	beta-dpsa-sftp.acordsolutions.net
Username:	Refer to SFTP username in the connection details supplied during Velonetic onboarding process.
Password:	Not required, Use "Private Key file" & "Passphrase" for authentication.
Private key file:	Refer to SFTP private key in the connection details supplied during Velonetic onboarding process and import .ppk file to your service.
Passphrase:	Refer to SFTP passphrase in the connection details supplied during Velonetic onboarding process .

Other Settings	Value
Market Group Reference:	Refer to Market Group Reference supplied during Velonetic onboarding process. Please note that the Market Group Reference contains both an Account and User element.
Market Id:	Refer to Market Id supplied during Velonetic onboarding process.

## Environment - Production

SFTP Settings	Value
File protocol	SFTP
Port number:	22
Host name:	<i>To be confirmed.</i>
Username:	Refer to SFTP username in the connection details supplied during Velonetic onboarding process.
Password:	Not required, Use "Private Key file" & "Passphrase" for authentication.
Private key file:	Refer to SFTP private key in the connection details supplied during Velonetic onboarding process and import .ppk file to your service.
Passphrase:	Refer to SFTP passphrase in the connection details supplied during Velonetic onboarding process.

Other Settings	Value
Market Group Reference:	Refer to Market Group Reference supplied during Velonetic onboarding process. Please note that the Market Group Reference contains both an Account and User element.
Market Id:	Refer to Market Id supplied during Velonetic onboarding process.

## 3.2 ACORD DRI

This connection type is used by Velonetic customers (and their vendors) that are:

- Brokers and Service Companies that use the A&S and ECF DRI interface to submit to the Velonetic Document Service

Brokers, Service Companies, Insurers, Reinsurers, MGAs, and Managing Agents that use ACORD DRI to interface with the Velonetic Document Service

Supported Standards:

- ACORD Message Service 1.4.3
- Document Repository Interface Reference Guide V1.2.2 (Schema Version 1.2.0)

### 3.2.1 Connection guide

Environment - Beta (used for customer testing, including Vanguard, LIMOSS coordinated and enhanced customer testing)

**NB:** please ensure the URL contains the ‘-‘when performing a cut and paste of the Endpoint URL

ACORD AMS Settings	Value																		
Endpoint:	<a href="https://beta-dpsa-conductor-dri.acordsolutions.net/esbservice/services/amsEndpoint">https://beta-dpsa-conductor-dri.acordsolutions.net/esbservice/services/amsEndpoint</a>																		
Authentication:	Digitally Signed message sent via HTTPS.																		
Public Certificate:	Velonetic will supply the public certificate during the onboarding process.																		
Other IP addresses to expect responses from:	35.176.43.61 3.10.11.43																		
Inbound connection details (If required for whitelisting purposes):	Option 1 – DNS endpoint whitelisting (Preferred): as mentioned above. OR Option 2 – IPs whitelisting (Below IPs are subjected to change. In case of any issues, please log a ticket with support):  <table border="0"> <tr> <td colspan="3">CLOUDFRONT_GLOBAL_IP_LIST</td> </tr> <tr> <td>120.52.22.96/27</td> <td>3.160.0.0/14</td> <td>120.232.236.0/25</td> </tr> <tr> <td>205.251.249.0/24</td> <td>116.129.226.0/25</td> <td>111.13.185.64/27</td> </tr> <tr> <td>180.163.57.128/26</td> <td>52.222.128.0/17</td> <td>3.164.0.0/18</td> </tr> <tr> <td>204.246.168.0/22</td> <td>18.164.0.0/15</td> <td>54.182.0.0/16</td> </tr> <tr> <td>111.13.171.128/26</td> <td>111.13.185.32/27</td> <td>58.254.138.128/26</td> </tr> </table>	CLOUDFRONT_GLOBAL_IP_LIST			120.52.22.96/27	3.160.0.0/14	120.232.236.0/25	205.251.249.0/24	116.129.226.0/25	111.13.185.64/27	180.163.57.128/26	52.222.128.0/17	3.164.0.0/18	204.246.168.0/22	18.164.0.0/15	54.182.0.0/16	111.13.171.128/26	111.13.185.32/27	58.254.138.128/26
CLOUDFRONT_GLOBAL_IP_LIST																			
120.52.22.96/27	3.160.0.0/14	120.232.236.0/25																	
205.251.249.0/24	116.129.226.0/25	111.13.185.64/27																	
180.163.57.128/26	52.222.128.0/17	3.164.0.0/18																	
204.246.168.0/22	18.164.0.0/15	54.182.0.0/16																	
111.13.171.128/26	111.13.185.32/27	58.254.138.128/26																	

18.160.0.0/15	64.252.128.0/18	120.253.245.192/27
205.251.252.0/23	205.251.254.0/24	54.239.192.0/19
54.192.0.0/16	3.166.0.0/15	18.68.0.0/16
204.246.173.0/24	54.230.224.0/19	18.64.0.0/14
54.230.200.0/21	71.152.0.0/17	120.52.12.64/26
120.253.240.192/26	216.137.32.0/19	99.84.0.0/16
116.129.226.128/26	204.246.172.0/24	205.251.204.0/23
130.176.0.0/17	205.251.202.0/23	130.176.192.0/19
108.156.0.0/14	18.172.0.0/15	52.124.128.0/17
99.86.0.0/16	120.52.39.128/27	205.251.200.0/24
13.32.0.0/15	118.193.97.64/26	204.246.164.0/22
120.253.245.128/26	3.164.64.0/18	13.35.0.0/16
13.224.0.0/14	18.154.0.0/15	204.246.174.0/23
70.132.0.0/18	54.240.128.0/18	3.164.128.0/17
15.158.0.0/16	205.251.250.0/23	3.172.0.0/18
111.13.171.192/26	180.163.57.0/25	36.103.232.0/25
13.249.0.0/16	52.46.0.0/18	119.147.182.128/26
18.238.0.0/15	52.82.128.0/19	118.193.97.128/25
18.244.0.0/15	54.230.0.0/17	120.232.236.128/26
205.251.208.0/20	54.230.128.0/18	204.246.176.0/20
3.165.0.0/16	54.239.128.0/18	65.8.0.0/16
3.168.0.0/14	130.176.224.0/20	65.9.0.0/17
65.9.128.0/18	36.103.232.128/26	108.138.0.0/15
130.176.128.0/18	52.84.0.0/15	120.253.241.160/27
58.254.138.0/25	143.204.0.0/16	64.252.64.0/18
205.251.201.0/24	144.220.0.0/16	
205.251.206.0/23	120.52.153.192/26	
54.230.208.0/20	119.147.182.0/25	
CLOUDFRONT_REGIONAL_EDGE_IP_LIST		
13.113.196.64/26	18.175.65.0/24	3.128.93.0/24
13.113.203.0/24	18.175.66.0/24	3.134.215.0/24
52.199.127.192/26	18.175.67.0/24	3.146.232.0/22
13.124.199.0/24	3.10.17.128/25	3.147.164.0/22
3.35.130.128/25	3.11.53.0/24	3.147.244.0/22
52.78.247.128/26	52.56.127.0/25	52.15.127.128/26
13.233.177.192/26	15.188.184.0/24	3.101.158.0/23
15.207.13.128/25	52.47.139.0/24	52.52.191.128/26
15.207.213.128/25	3.29.40.128/26	34.216.51.0/25
52.66.194.128/26	3.29.40.192/26	34.223.12.224/27
13.228.69.0/24	3.29.40.64/26	34.223.80.192/26
52.220.191.0/26	3.29.57.0/26	35.162.63.192/26
13.210.67.128/26	18.229.220.192/26	35.167.191.128/26
13.54.63.128/26	18.230.229.0/24	35.93.168.0/23
3.107.43.128/25	18.230.230.0/25	35.93.170.0/23
3.107.44.0/25	54.233.255.128/26	35.93.172.0/23
3.107.44.128/25	3.231.2.0/25	44.227.178.0/24
43.218.56.128/26	3.234.232.224/27	44.234.108.128/25



	43.218.56.192/26	3.236.169.192/26	44.234.90.252/30
	43.218.56.64/26	3.236.48.0/23	
	43.218.71.0/26	34.195.252.0/24	
	99.79.169.0/24	34.226.14.0/24	
	18.192.142.0/23	44.220.194.0/23	
	18.199.68.0/22	44.220.196.0/23	
	18.199.72.0/22	44.220.198.0/23	
	18.199.76.0/22	44.220.200.0/23	
	35.158.136.0/24	44.220.202.0/23	
	52.57.254.0/24	44.222.66.0/24	
	18.200.212.0/23	13.59.250.0/26	
	52.212.248.0/26	18.216.170.128/25	

## Environment - Production

ACORD AMS Settings	Value
Endpoint:	<i>To be confirmed.</i>
Authentication:	Digitally Signed message sent via HTTPS.
Public Certificate:	Velonetic will supply the public certificate during the onboarding process.

## 3.3 Writeback

This connection type is used by Velonetic customers (and their vendors) that are:

- Insurers that subscribe to the Writeback Service.

Note: An ACORD DRI connection is required to download, upload and/or search for documents associated with a claim.

Supported Standards:

- ECF-WriteBack version 3.6.3

### 3.3.1 Connection guide

Environment – Beta (used for customer testing, including Vanguard, LIMOSS coordinated and enhanced customer testing)

**NB:** please ensure the URL contains the ‘-’ when performing a cut and paste of the Endpoint URL

Setting	Value
Endpoint:	<a href="https://beta-dpsa-conductor-writeback.acordsolutions.net/esbservice/services/claimRetrieveResponseEndpoint">https://beta-dpsa-conductor-writeback.acordsolutions.net/esbservice/services/claimRetrieveResponseEndpoint</a>
Authentication:	Digitally Signed message sent via HTTPS.
Public Certificate:	Velonetic will supply the public certificate during the onboarding process.
Other IP addresses to expect responses from:	35.176.43.61 3.10.11.43
Inbound connection details (If required for whitelisting purposes):	<p>Option 1 – DNS endpoint whitelisting (Preferred): as mentioned above. OR Option 2 – IPs whitelisting (Below IPs are subjected to change. In case of any issues, please log a ticket with support):</p> <pre> CLOUDFRONT_GLOBAL_IP_LIST 120.52.22.96/27      3.160.0.0/14      120.232.236.0/25 205.251.249.0/24    116.129.226.0/25  111.13.185.64/27 180.163.57.128/26   52.222.128.0/17   3.164.0.0/18 204.246.168.0/22    18.164.0.0/15     54.182.0.0/16 111.13.171.128/26   111.13.185.32/27  58.254.138.128/26 18.160.0.0/15       64.252.128.0/18   120.253.245.192/27 205.251.252.0/23    205.251.254.0/24  54.239.192.0/19 54.192.0.0/16       3.166.0.0/15      18.68.0.0/16 204.246.173.0/24    54.230.224.0/19   18.64.0.0/14 54.230.200.0/21     71.152.0.0/17     120.52.12.64/26                     </pre>

120.253.240.192/26	216.137.32.0/19	99.84.0.0/16
116.129.226.128/26	204.246.172.0/24	205.251.204.0/23
130.176.0.0/17	205.251.202.0/23	130.176.192.0/19
108.156.0.0/14	18.172.0.0/15	52.124.128.0/17
99.86.0.0/16	120.52.39.128/27	205.251.200.0/24
13.32.0.0/15	118.193.97.64/26	204.246.164.0/22
120.253.245.128/26	3.164.64.0/18	13.35.0.0/16
13.224.0.0/14	18.154.0.0/15	204.246.174.0/23
70.132.0.0/18	54.240.128.0/18	3.164.128.0/17
15.158.0.0/16	205.251.250.0/23	3.172.0.0/18
111.13.171.192/26	180.163.57.0/25	36.103.232.0/25
13.249.0.0/16	52.46.0.0/18	119.147.182.128/26
18.238.0.0/15	52.82.128.0/19	118.193.97.128/25
18.244.0.0/15	54.230.0.0/17	120.232.236.128/26
205.251.208.0/20	54.230.128.0/18	204.246.176.0/20
3.165.0.0/16	54.239.128.0/18	65.8.0.0/16
3.168.0.0/14	130.176.224.0/20	65.9.0.0/17
65.9.128.0/18	36.103.232.128/26	108.138.0.0/15
130.176.128.0/18	52.84.0.0/15	120.253.241.160/27
58.254.138.0/25	143.204.0.0/16	64.252.64.0/18
205.251.201.0/24	144.220.0.0/16	
205.251.206.0/23	120.52.153.192/26	
54.230.208.0/20	119.147.182.0/25	

CLouDFRoNT\_REgIoNAL\_EdGE\_IP\_LISt

13.113.196.64/26	18.175.65.0/24	3.128.93.0/24
13.113.203.0/24	18.175.66.0/24	3.134.215.0/24
52.199.127.192/26	18.175.67.0/24	3.146.232.0/22
13.124.199.0/24	3.10.17.128/25	3.147.164.0/22
3.35.130.128/25	3.11.53.0/24	3.147.244.0/22
52.78.247.128/26	52.56.127.0/25	52.15.127.128/26
13.233.177.192/26	15.188.184.0/24	3.101.158.0/23
15.207.13.128/25	52.47.139.0/24	52.52.191.128/26
15.207.213.128/25	3.29.40.128/26	34.216.51.0/25
52.66.194.128/26	3.29.40.192/26	34.223.12.224/27
13.228.69.0/24	3.29.40.64/26	34.223.80.192/26
52.220.191.0/26	3.29.57.0/26	35.162.63.192/26
13.210.67.128/26	18.229.220.192/26	35.167.191.128/26
13.54.63.128/26	18.230.229.0/24	35.93.168.0/23
3.107.43.128/25	18.230.230.0/25	35.93.170.0/23
3.107.44.0/25	54.233.255.128/26	35.93.172.0/23
3.107.44.128/25	3.231.2.0/25	44.227.178.0/24
43.218.56.128/26	3.234.232.224/27	44.234.108.128/25
43.218.56.192/26	3.236.169.192/26	44.234.90.252/30
43.218.56.64/26	3.236.48.0/23	
43.218.71.0/26	34.195.252.0/24	
99.79.169.0/24	34.226.14.0/24	
18.192.142.0/23	44.220.194.0/23	

	18.199.68.0/22	44.220.196.0/23
	18.199.72.0/22	44.220.198.0/23
	18.199.76.0/22	44.220.200.0/23
	35.158.136.0/24	44.220.202.0/23
	52.57.254.0/24	44.222.66.0/24
	18.200.212.0/23	13.59.250.0/26
	52.212.248.0/26	18.216.170.128/25

## Environment - Production

Setting	Value
Endpoint:	<i>To be confirmed.</i>
Authentication:	Digitally Signed message sent via HTTPS.
Public Certificate:	Velonetic will supply the public certificate during the onboarding process.

## Appendix A - Subfolders for EDI

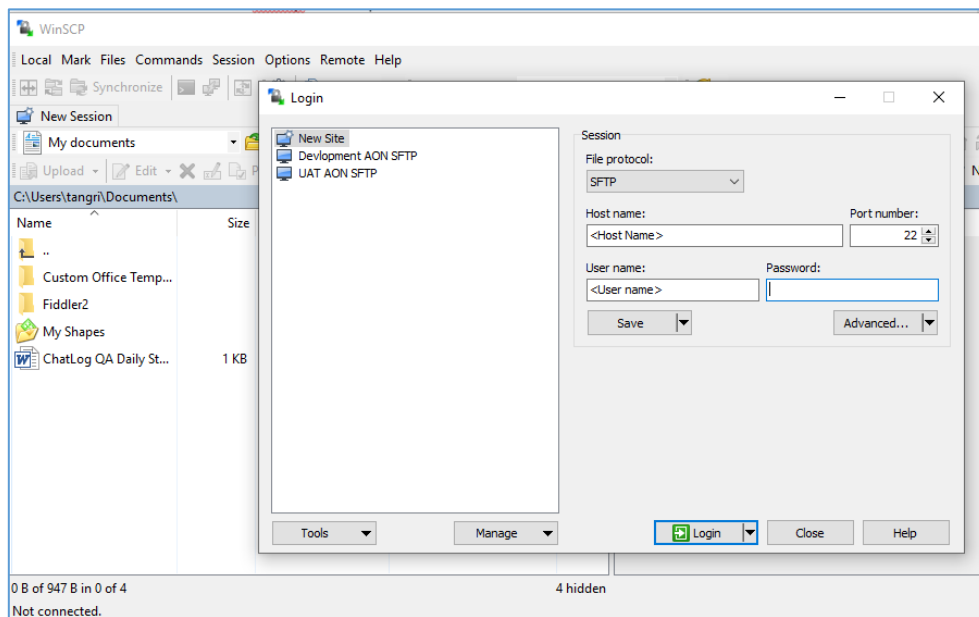
Folder Name

Direction	Folder Name
Outbound	BSM
Outbound	CLMILB
Outbound	CLMILC
Outbound	CLMLLB
Outbound	CLMLRB
Outbound	CLMLRC
Outbound	CSMCST
Outbound	DSIGN
Outbound	ILUCSB
Outbound	ILUCSM
Outbound	IPCBSM
Outbound	IPCCSM
Outbound	IPCDSM
Inbound	LIMCLM
Outbound	LIMRES
Outbound	LIMRES_BROKER
Outbound	LIMRES_UW
Outbound	LIMRIA
Outbound	LIMRID
Inbound	LIMRID
Inbound	LIMRIN
Outbound	LIMRIS_BROKER
Outbound	LIMRIS_UW
Outbound	LLDUWR

Inbound	LLDUWR
Outbound	MCM
Outbound	REDIAL
Inbound	RESETT
Outbound	SCM
Outbound	USM
Outbound	WSETT

## Appendix B - Transferring file using a Windows FTP tool (WinSCP)

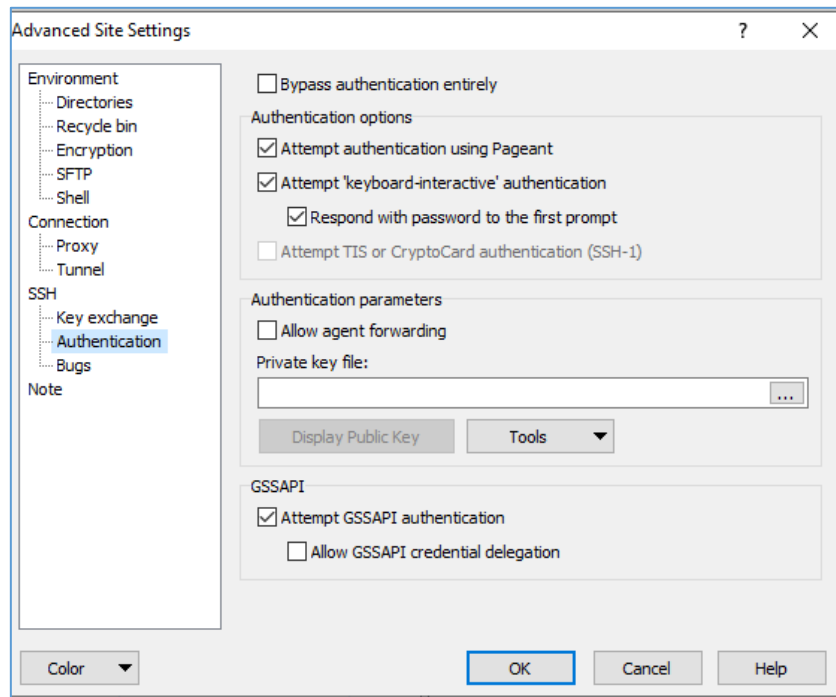
1. Download and install **WinnSCP** which is an FTP client tool for Windows (**Velonetic is not responsible for this software please take appropriate precautions**)
2. Click on new site icon to configure a new connection:



3. Fill in required details:
  - a. Host name - *<Enter provided host name from Connection Details supplied by your SFTP service provider >*
  - b. User name - *<Enter provided user name from Connection Details supplied by your SFTP service provider >*

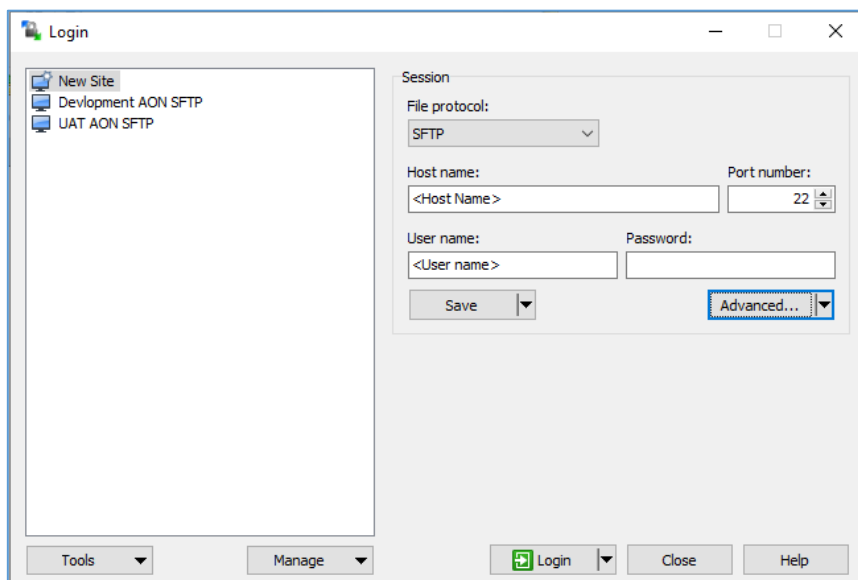
*Note: No password to be entered here*

4. Click on "Advanced..." button and navigate to "Authentication" section as shown below



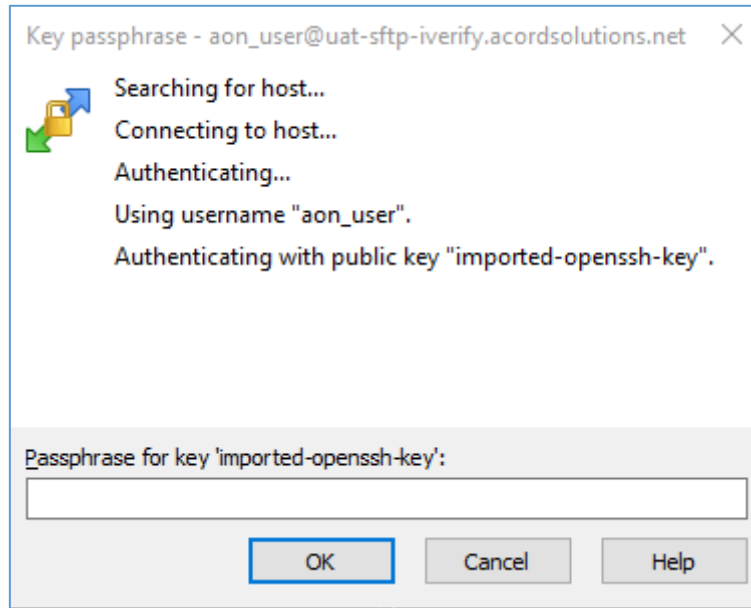
5. Copy .ppk file from Connection Details section below on your local machine. Navigate to that file from "Private key file" lookup button on WinSCP. Click "OK"

6. Press Login button on below dialog to login:



7. Enter passphrase provided in Connection Details supplied by your SFTP service provider in the passphrase prompt and click "OK"





8. From root folder navigate to required folder