



EDI Technical specification

LIMRIA

LORS: ORI Advice Message

Issue Date: October 2023

Copyright Information

© Velonetic™ 2023

All rights reserved. No part of this publication may be reproduced, stored in a retrieval system, or transmitted in any form or by any means, electronic, mechanical photocopying, recording, or otherwise, without the prior permission of Velonetic.

Note only signed hard copies and electronic masters of documents will be controlled. Any other copy may not be current.

Trademark Information

Company, product, or brand names mentioned in this document, may be the trademarks of their owners.

USE OF THE TECHNICAL SPECIFICATION

Update - March 2023: This technical specification was released in March 2023 and replaces the version dated June 2009. The following changes have been made.

Formatting has been applied to reflect the technical specification has been published by the London Market Joint Venture.

Section Number/Name	Change	Reason for Change
5. Data Mapping DE - Audit DTI Code	Format length changed from 1 to 2, also from C to M	Spec amended after mainframe confirmation
5. Data Mapping DE - Bureau Signing Reference	Format length changed from 15 to 13	Spec amended after mainframe confirmation
5. Data Mapping DE - Broker Reference 2	Format length changed from 15 to 13	Spec amended after mainframe confirmation
5. Data Mapping DE - Bureau Original Signing Reference	Format length changed from 15 to 13	Spec amended after mainframe confirmation
5. Data Mapping DE - Year of Account	M/C changed from M to C	Spec amended after mainframe confirmation
5. Data Mapping DE - Company/Syndicate Identification (Client)	Format length changed from 9 to 4	Spec amended after mainframe confirmation
5. Data Mapping DE - Company Synd Reference	M/C changed from M to C	Spec amended after mainframe confirmation
5. Data Mapping DE - Company/Syndicate Secondary Reference	Format length changed from 15 to 8	Spec amended after mainframe confirmation
5. Data Mapping DE - Lead Syndicate Identification	M/C changed from M to C	Spec amended after mainframe confirmation
5. Data Mapping DE - Interest	Format length changed from 70 to 30	Spec amended after mainframe confirmation
5. Data Mapping DE - ORI Further Narrative	Format length changed from 70 to 64	Spec amended after mainframe confirmation
5. Data Mapping DE - Reinsurer Company/Synd Identification	M/C changed from C to M	Spec amended after mainframe confirmation
5. Data Mapping DE - Reinsurer Company/Synd Status Code	M/C changed from C to M	Spec amended after mainframe confirmation
6. Data Conditions - Audit DTI Code	M/C changed from M to C	Spec amended after mainframe confirmation
6. Data Conditions - Company/Synd Reference	M/C changed from M to C	Spec amended after mainframe confirmation
6. Data Conditions - Lead Syndicate Identification	M/C changed from M to C	Spec amended after mainframe confirmation

6. Data Conditions - Lloyd's Accounting Type	M/C changed from M to C	Spec amended after mainframe confirmation
6. Data Conditions - Reinsurer Company/Synd ID	M/C changed from C to M	Spec amended after mainframe confirmation
6. Data Conditions - Year of Account	M/C changed from M to C	Spec amended after mainframe confirmation

**APPENDIX F3 - LORS OUTWARD R/I ADVICE MESSAGE -
LIMRIA**

CONTENTS

1. INTRODUCTION	6
1.1 Purpose	6
1.2 References	6
1.3 Field of Application	6
1.4 Functional Definition	6
2. MESSAGE DEFINITION	7
2.1 Introduction	7
2.2 Group and Segment Usage	7
2.3 Segment Table	11
2.4 Segment Directory Note	13
2.5 Code Sets Note	13
3. BRANCHING DIAGRAM for LIMRIA v3.0	14
4. Data Mapping	15
5. DATA CONDITIONS FOR EACH LIMRIA BUSINESS APPLICATION	20
6. EXAMPLE MESSAGE	24

1. INTRODUCTION

1.1 Purpose

This appendix specifies the Lloyd's Outward Reinsurance Scheme (LORS) message, LIMRIA, that is sent to advise LORS participating Underwriters of new and corrected Outward Reinsurance (ORI) items.

1.2 References

The following documents have been used in the composition of this message:

- UN/EDIFACT Syntax rules (ISO 9735)
- UN Trade Data Elements Directory (ex ISO 7372)
- UN/EDIFACT Data Segments Directory
- UN/EDIFACT Code Set Directory

1.3 Field of Application

This message has been specifically designed for use within the Lloyd's Outward Reinsurance Scheme (LORS).

1.4 Functional Definition

Currently the only defined LORS business application for LIMRIA is to enable DXC to advise the Underwriters, who are participating in the scheme, of new, amended or replacement ORI items. The LIMRIA message design supports the transmission of :

- all new items relating to the same policy which have the same Unique Market Reference
- an amended pre-settlement item
- a replacement for a post-settlement item.

DXC receives the ORI item details from Brokers, either via data messages or directly via the LORS interactive system. Following validation, the details are made available to the Underwriters, who are responsible for authorising their settlement. Again this can be done interactively or by message, using the LIMRIA message.

This document defines the structure and content of the message that satisfies the above functionality.

2. MESSAGE DEFINITION

2.1 Introduction

The definition of an EDIFACT message that will satisfy a practical business application requires the

unambiguous statement of:

- group and segment usage in the business context, which is defined in this appendix.
- the information hierarchy (the message structure), which is also defined in this appendix.
- the standard EDIFACT structures used to compose the message (refer to the LORS Batch Segment Directory in Appendix C).
- the code sets that will be used in the operational application (refer to the LORS Batch Code Set List in Appendix B).

2.2 Group and Segment Usage

2.2.1 PURPOSE

Most of the segments used in this message were designed to be applicable over a wide range of messages covering various commercial and administrative applications. This section is provided to give details of their particular use within this message.

2.2.2 USAGE

UNB, Interchange Header

A mandatory service segment starting, identifying and specifying a transmission. The Application Reference for the LORS Outward Reinsurance Advice Message is LIMORI.

UNH, Message header

A mandatory service segment starting and uniquely identifying a message. The message type for the LORS Outward Reinsurance Advice Message is LIMRIA.

GIS, General Indicator Segment

A mandatory repeating segment indicating the type of item(s) contained within the message i.e. new, amended or replacement item(s) requiring authorisation or advised for information only.

RFF, References

A mandatory repeating segment providing the mandatory Unique Market Reference that the Broker has allocated to the reinsurance policy, plus the reference that the Broker has given to a group of associated credit/debit items that are being advised in the message. If the message contains the details of a single non-grouped credit/debit item, a group reference is not present.

NAD, Name and Address

A mandatory segment identifying the Broker.

Segment Group 1.

SEGMENT GROUP 1

A mandatory group of repeating segments which has other repeating groups nested within it. This group repeats, up to the maximum of 999 times, once for each item that can be contained in the message.

RFF, References

A mandatory segment giving the Transaction Reference that has been allocated by the Broker to items with the same settlement currency.

CUX, Currencies

A mandatory segment giving the settlement currency code for the item.

Segment Group 2.

RFF, References

A mandatory, repeating segment containing the Policy Number (Broker Reference 1); the Lloyd's Item Number; and the non-unique Credit/Debit Note Number (Broker Reference 2) that have been allocated to the item by the Broker. Also advised are a number indicating how many movements have been applied to this version of the item; the ORI unique reference (Bureau Unique Reference) allocated by DXC the LORS Bureau Unique Reference Version, the Lloyd's allocated signing reference and, if known, the signing reference of the original premium transaction.

DTM, Date and Time

A mandatory, repeating segment giving the dates when the reinsurance policy cover incepts and ends; the Lloyd's year of account and if applicable the date on which the Broker would like settlement of the item to take place.

PCD, Percentage Details

A mandatory segment that is repeated to give the details of the percentage of the reinsuring company/Syndicates that have been approved by the Department of Trade and Industry; the total percentage reinsured and the percentage that has been ceded to Lloyd's; plus, when applicable, the percentage unprotected from Federal Excise Tax.

Segment Group 3

MOA, Monetary Amount

A mandatory repeating segment providing the monetary amount details of the credit/debit item.

NAD, Name and Address

A mandatory repeating segment supplying the identity of the lead Syndicate on the item and the name of the Retrocessionaire.

CTA, Contacts

A mandatory segment providing the name and telephone number of the person in the Broker office to whom queries, concerning the item, can be directed.

FTX, Free Text

A repeating conditional segment providing policy information, excess details and the type of risk in narrative form plus any additional details relating to the individual credit/debit item.

Segment Group 4

Segment Group 5

SEGMENT GROUP 2

A mandatory group of repeating segments, nested within Group 1, providing the value of the item's codes and processing indicators. This group repeats, up to the maximum of 11 times, for each item contained in the message.

GIS, General Indicator Segment

A mandatory repeating segment which supplies a number of mandatory and conditional codes and indicators that are applicable to the item. These include; codes to describe the category of the item (e.g. claim credit); the method of payment (e.g. deferred); FIL tax code information; a code to indicate the method of settlement (e.g. special settlement); the assigned Department of Trade and Industry code; the risk code; and up to three audit codes (one for each of the pre-1991 Lloyd's insurance markets).

NAD, Name and Address

A conditional segment identifying the leading Syndicate for the market of the Audit Code specified in the preceding GIS segment, i.e. the Syndicate with authority to change that code. This segment will occur once for each Audit Code advised.

SEGMENT GROUP 3

A mandatory group of repeating segments, nested within Group 1, containing the client Syndicate details. It can repeat up to 150 times for each occurrence of Group 1.

NAD, Name and Address

A mandatory segment identifying the Syndicate.

RFF, References

A mandatory repeating segment providing the line number and, Underwriter's references.

MOA, Monetary Amount

A mandatory segment containing the amount that the Syndicate will pay/receive in respect of the credit/debit item.

PCD, Percentage Details

A mandatory segment containing the percentage of the total credit/debit amount that the Syndicate will pay/receive.

SEGMENT GROUP 4

A conditional group of repeating segments, nested within Group 1, which occurs if the item is to be paid by deferred instalments. It contains the instalment details and can repeat up to 36 times for each occurrence of Group 1.

DTM, Date and Time

This segment is mandatory within this segment group. It contains the date that the instalment is due to be settled.

RFF, References

This segment is mandatory within this segment group. It contains the unique instalment number.

MOA, Monetary Amount

This segment is mandatory within this segment group. It contains the monetary amount of a deferred payment.

SEGMENT GROUP 5

A conditional group of repeating segments, nested within Group 1, which provides information regarding the reinsuring company market. It can repeat up to 999 times within each occurrence of Group 1.

NAD, Name and Address

A segment that is mandatory within this conditional segment group. It gives the coded identity and name, of members of the company reinsuring market.

RFF, References

A conditional segment containing the reference of the Collection Note within which the Reinsurer amount was originally included.

GIS, General Indicator Segment

A mandatory repeating segment used to indicate the payment status and role of the reinsuring Company/Syndicate, identified in the preceding NAD segment.

MOA, Monetary Amount

A conditional segment giving the amount that the party, identified in the NAD segment, has paid or has yet to pay.

UNT, Message Trailer

A mandatory service segment sent to end and check the completeness of a message.

UNZ, Interchange Trailer

A mandatory service segment sent to end and check the completeness of an interchange.

2.3 Segment Table

	<u>TAG</u>	<u>NAME</u>		<u>REPEATS</u>	<u>REPEATS</u>
	UNH	Message Header	M	1	
GIS General Indicator M 3		RFF References M 2			
NAD	Name and Address	M 1	Segment Group 1		
	SEGMENT GROUP 1		M		999
	RFF	References	M	1	
	CUX	Currencies	M	1	
	Segment Group 2				
	RFF	References	M	10	
	DTM	Date and Time	M	5	
	PCD	Percentage Details	M	4	
	Segment Group 3				
	MOA	Monetary Amount	C	3	
	NAD	Name and Address	M	2	

CTA	Contacts	M	1	
FTX	Free Text	C	25	
Segment Group 4				
Segment Group 5				
UNT	Message Trailer	M		
SEGMENT GROUP 2				
		M		11
GIS	General Indicator	M	1	
NAD	Name and Address	C	1	
SEGMENT GROUP 3				
		M		150
NAD	Name and Address	M	1	
RFF	References	M	3	
MOA	Monetary Amount	M	1	
PCD	Percentage Details	M	1	
SEGMENT GROUP 4				
		C		36
DTM	Date and Time	M	1	
RFF	References	M	1	
MOA	Monetary Amount	M	1	
SEGMENT GROUP 5				
		C		999
NAD	Name and Address	M	1	
RFF	Reference	C	1	
GIS	General Indicator	M	2	
MOA	Monetary Amount	C	1	

2.4 Segment Directory Note

All segments, with the exception of the MOA, GIS, PCD and DTM segments, used in this message are drawn

from the UN/EDIFACT Data Segments Directory (90.1), dated 15th February, 1990.

The MOA segment is drawn from the UN/EDIFACT Data Segments Directory (91.1), dated 7th March, 1991.

The GIS segment is drawn from the UN/EDIFACT Quality Control segment directory dated June 1990.

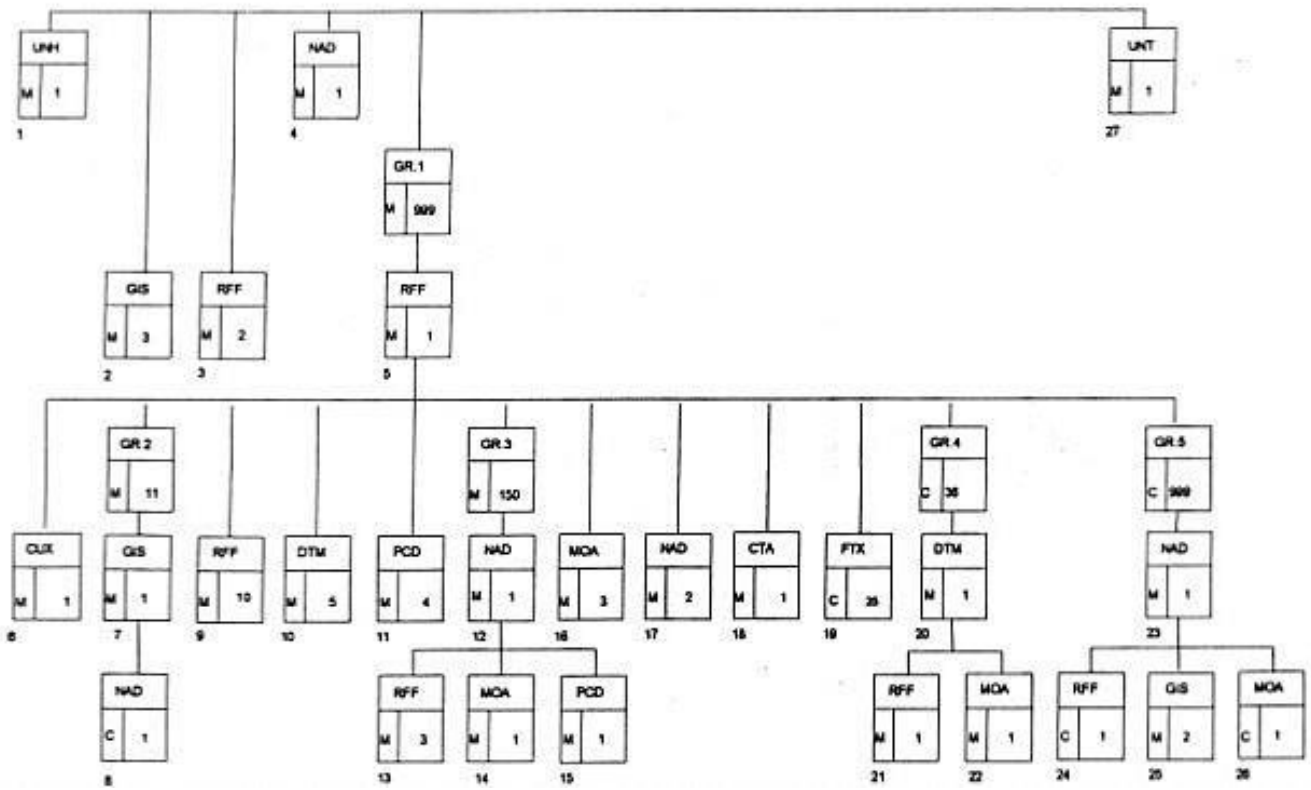
The PCD and DTM segments are London specific standards.

For specification of these segments refer to the LORS Segment Directory (Appendix C).

2.5 Code Sets Note

The code sets that are used in this application are defined in the LORS Code Set List (Appendix B).

3. BRANCHING DIAGRAM FOR LIMRIA V3.0



4. DATA MAPPING

The segments are listed in the order in which they appear in the message.

The number given in brackets after a segment tag refers to the number shown against the relevant box on the branching diagram in section 4 of this appendix.

The mandatory/conditional status of each data element is shown. This refers to the status of the element within the message and not within the specified segment.

Refer to section 6 of this appendix for the specific conditions that can apply for each LORS business application of LIMRIA.

Refer to section 4 of this manual (Security, Audit and Control) for details of the data mapping for the interchange and message header and trailer segments.

The data element lengths shown below are the TCG formats and could be affected by the LORS Validation rules (refer to Appendix E).

<u>DATA ELEMENT</u>	<u>FORMA T</u>	<u>M/C</u>	<u>COMMENT</u>
MOVEMENT TYPE	an3	M	Mapped into data element 7771, in segment GIS (2), and qualified in data element 1131.
INFORMATION ONLY INDICATOR	an1	C	Mapped into data element 7771, in segment GIS (2), and qualified in data element 1131.
UNIQUE MARKET REFERENCE	an17	M	Mapped into data element 1154, in segment RFF (3), and qualified in data element 1153.
GROUP REFERENCE	an12	C	Mapped into data element 1154, in segment RFF (3), and qualified in data element 1153.
BROKER NUMBER	an4	M	Mapped into data element 3039, in segment NAD (4) and qualified in data element 3035.
TRANSACTION REFERENCE	an12	M	Mapped into data element 1154, in segment RFF (5), and qualified in data element 1153.
SETTLEMENT CURRENCY	an3	M	Mapped into data element 6345, in segment CUX (6), and qualified in data element 6343.
ENTRY TYPE	an3	M	Mapped into data element 7771, in segment GIS (7), and qualified in data element 1131.
AUDIT DTI CODE	an2	C	Mapped into data element 7771, in segment GIS (7), and qualified in data element 1131.

RISK CODE	an2	C	Mapped into data element 7771, in segment GIS (7), and qualified in data element 1131.
AVIATION AUDIT CODE	an2	C	Mapped into data element 7771, in segment GIS (7), and qualified in data element 1131.
MARINE AUDIT CODE	an2	C	Mapped into data element 7771, in segment GIS (7), and qualified in data element 1131.
NON MARINE AUDIT CODE	an2	C	Mapped into data element 7771, in segment GIS (7), and qualified in data element 1131.
TAX CODE	an3	C	Mapped into data element 7771, in segment GIS (7), and qualified in data element 1131.
TREATY EXCESS OF LOSS INDICATOR	an1	C	Mapped into data element 7771, in segment GIS (7), and qualified in data element 1131.
INSTALMENT TYPE	an1	C	Mapped into data element 7771, in segment GIS (7), and qualified in data element 1131.

<u>DATA ELEMENT</u>	<u>FORMA I</u>	<u>M/C</u>	<u>COMMENT</u>
LLOYD'S ACCOUNTING TYPE	an1	C	Mapped into data element 7771, in segment GIS (7), and qualified in data element 1131.
FULL MARKET INDICATOR	an1	C	Mapped into data element 7771, in segment GIS (7), and qualified in data element 1131.
SUPPLEMENTARY DOCUMENTATION INDICATOR	an1	C	Mapped into data element 7771, in segment GIS (7), and qualified in data element 1131.
MARKET LEADER IDENTIFICATION	an4	C	Mapped into data element 3039, in segment NAD (8), and qualified in data element 3035.
LLOYD'S ITEM NUMBER	an5	M	Mapped into data element 1154, in segment RFF (9), and qualified in data element 1153.
MOVEMENT NUMBER	an3	M	Mapped into data element 1154, in segment RFF (9), and qualified in data element 1153.
BUREAU SIGNING REFERENCE	an15	C	Mapped into data element 1154, in segment RFF (9), and qualified in data element 1153.
BROKER REFERENCE 1	an12	M	Mapped into data element 1154, in segment RFF (9), and qualified in data element 1153.

BROKER REFERENCE 2	an12	M	Mapped into data element 1154, in segment RFF (9), and qualified in data element 1153.
BUREAU ORIGINAL SIGNING REFERENCE	an15	C	Mapped into data element 1154, in segment RFF (9), and qualified in data element 1153.
BUREAU UNIQUE REFERENCE	an13	M	Mapped into data element 1154, in segment RFF (9) and qualified in data element 1153.
BUREAU UNIQUE REFERENCE VERSION	an2	M	Mapped into data element 1154, in segment RFF (9) and qualified in data element 1153.
UNIQUE CLAIM REFERENCE	an17	C	Mapped into data element 1154, in segment RFF (9), and qualified in data element 1153.
MAJOR CASUALTY RELATED EVENT CODE	an4	C	Mapped into data element 1154, in segment RFF (9), and qualified in data element 1153.
YEAR OF ACCOUNT	n8	C	Mapped into data element 2001, in segment DTM (10), and qualified in data element 2005.
PLANNED SETTLEMENT DATE	n8	C	Mapped into data element 2001, in segment DTM (10), and qualified in data element 2005.

<u>DATA ELEMENT</u>	<u>FORMA T</u>	<u>M/C</u>	<u>COMMENT</u>
PERIOD OF POLICY FROM DATE	n8	C	Mapped into data element 2001, in segment DTM (10), and qualified in data element 2005.
PERIOD OF POLICY TO DATE	n8	C	Mapped into data element 2001, in segment DTM (10), and qualified in data element 2005.
INCEPTION DATE	n8	C	Mapped into data element 2001, in segment DTM (10), and qualified in data element 2005. For future use
TOTAL COMPANY SYND PERCENTAGE	n10	M	Mapped into data element 5482, in segment PCD (11), and qualified in data element 5777.
PERCENTAGE CEDED TO LLOYD'S	n10	M	Mapped into data element 5482, in segment PCD (11), and qualified in data element 5777.
FETUP PERCENTAGE	n10	C	Mapped into data element 5482, in segment PCD (11), and qualified in data element 5777.

PERCENT CEDED TO DTI APPROVED COMPANIES	n10	C	Mapped into data element 5482, in segment PCD (11), and qualified in data element 5777.
COMPANY/SYNDICATE IDENTIFICATION (CLIENT)	an4	M	Mapped into data element 3039, in segment NAD (12), and qualified in data element 3035.
LINE NUMBER	an3	M	Mapped into data element 1154, in segment RFF (13), and qualified in data element 1153.
COMPANY SYND REFERENCE	an15	C	Mapped into data element 1154, in segment RFF (13), and qualified in data element 1153.
COMPANY/SYNDICATE SECONDARY REFERENCE	an815	C	Mapped into data element 1154, in segment RFF (13), and qualified in data element 1153.
COMPANY SYND NET PREMIUM SETT CCY	n15	M	Mapped into data element 5004, in segment MOA (14), and qualified in data element 5797.
COMPANY SYND PERCENTAGE	n10	M	Mapped into data element 5482, in segment PCD (15), and qualified in data element 5777.
NETT PREMIUM SETTLEMENT CCY	n15	M	Mapped into data element 5004, in segment MOA (16), and qualified in data element 5797.
TOTAL AMOUNT DUE	n15	C	Mapped into data element 5004, in segment MOA (16), and qualified in data element 5797.
TOTAL AMOUNT OUTSTANDING	n15	C	Mapped into data element 5004, in segment MOA (16), and qualified in data element 5797.

<u>DATA ELEMENT</u>	<u>FORMA T</u>	<u>M/C</u>	<u>COMMENT</u>
LEAD SYNDICATE IDENTIFICATION	an4	C	Mapped into data element 3124, in segment NAD (17), and qualified in data element 3035.
INSURED RETROCESSIONAIRE	an50	C	Mapped into two data elements 3124, in segment NAD (17), and qualified in data element 3035.
BROKER CONTACT	an15	M	Mapped into data element 3412, in segment CTA (18), and qualified in data element 3139.
BROKER CONTACT TELEPHONE NUMBER	an15	M	Mapped into data element 3148, in segment CTA (18), and qualified in data element 3139.
VOYAGE LOCATION	an70	C	Mapped into data element 4440, in segment FTX (19), and qualified in data element 4451.

INTEREST	an30	C	Mapped into data element 4440, in segment FTX (19), and qualified in data element 4451.
REINSURANCE EXCESS DETAILS	an70	C	Mapped into data element 4440, in segment FTX (19), and qualified in data element 4451.
PERIOD OF POLICY NARRATIVE	an40	C	Mapped into data element 4440, in segment FTX (19), and qualified in data element 4451.
ORI FURTHER NARRATIVE	an64	C	Mapped into five data elements 4440, in up to twenty FTX (19), segments and qualified in data element 4451.
PLANNED INSTALMENT DUE DATE	n8	C	Mapped into data element 2001, in segment DTM (20), and qualified in data element 2005.
INSTALMENT NUMBER	an3	C	Mapped into data element 1154, in segment RFF (21), and qualified in data element 1153.
NETT INSTALMENT SETT CCY	n15	C	Mapped into data element 5004, in segment MOA (22), and qualified in data element 5797.
REINSURER COMPANY/SYND IDENTIFICATION	an9	M	Mapped into data element 3039, in segment NAD (23), and qualified in data element 3035.
REINSURER COMPANY/SYND NAME	an35	C	Mapped into data element 3124, in segment NAD (23), and qualified in data element 3035.
COLLECTION NOTE REFERENCE	an8	C	Mapped into data element 1154, in segment RFF (24) and qualified in data element 1153.
REINSURER COMPANY/SYND STATUS CODE	an1	M	Mapped into data element 7771, in segment GIS (25), and qualified in data element 1131.

<u>DATA ELEMENT</u>	<u>FORMA T</u>	<u>M/C</u>	<u>COMMENT</u>
REINSURER TYPE	an1	C	Mapped into data element 7771, in segment GIS (25) and qualified in data element 1131.
REINSURER OUTSTANDING AMOUNT	n15	C	Mapped into data element 5004, in segment MOA (26), and qualified in data element 5797.
REINSURER PAID AMOUNT	n15	C	Mapped into data element 5004, in segment MOA (26), and qualified in data element 5797.

5. DATA CONDITIONS FOR EACH LIMRIA BUSINESS APPLICATION

Currently the only LORS business application that utilises the LIMRIA message is the notification of new, amended and replacement ORI items to the Underwriters, by Lloyd's. The data elements that are present in the message, and the conditions under which each can be present, are listed in alphabetical order below.

<u>DATA ELEMENT</u>	<u>M/C</u>	<u>COMMENT</u>
AUDIT DTI CODE	C	
AVIATION AUDIT CODE	C	May be present if the Year Account is 1990 or earlier.
BROKER CONTACT	M	
BROKER CONTACT TELEPHONE NO	M	
BROKER NUMBER	M	
BROKER REFERENCE 1	M	
BROKER REFERENCE 2	M	
BUREAU ORIGINAL SIGNING REF	C	Present if advised by the Broker.
BUREAU SIGNING REFERENCE	C	Only present on replacements of previously settled items.
BUREAU UNIQUE REFERENCE	M	Will always be present.
BUREAU UNIQUE REFERENCE VERSION	M	Will always be present.
COLLECTION NOTE REFERENCE	C	Present if advised by the Broker.
COMPANY/SYND ID (CLIENT)	M	
COMPANY/SYND NETT PREMIUM	M	
COMPANY/SYND PERCENTAGE	M	
COMPANY/SYND REFERENCE	C	
COMPANY/SYND SECONDARY REFERENCE	C	Present if advised by the Broker.
ENTRY TYPE	M	
FETUP PERCENTAGE	C	Present if appropriate to the transaction (US dollar premium credit and return debit items).

FULL MARKET INDICATOR	C	Present if a policy record and/or the full reinsuring market has been advised by the Broker.
GROUP REFERENCE	C	Only present if a new group is being advised.
INCEPTION DATE	C	For future use. Will not be present.
INFORMATION ONLY INDICATOR	C	Will be present if the item does not require authorisation, i.e., it is for information only.
INSTALMENT NUMBER	C	Present for deferred items only.
INSTALMENT TYPE	C	Will be present for deferred/reserve items only. If not present the default value of 'C', for Cash, can be assumed.
INSURED RETROCESSIONAIRE	C	Present if advised by the Broker.
INTEREST	C	Present if advised by the Broker.
LEAD SYNDICATE IDENTIFICATION	C	
LINE NUMBER	M	
LLOYD'S ACCOUNTING TYPE	C	
LLOYD'S ITEM NUMBER	M	
MAJOR CASUALTY RELATED EVENT	C	Present if advised by the Broker.
MARINE AUDIT CODE	C	May be present if the Year Account is 1990 or earlier.
MARKET LEADER IDENTIFICATION	C	Will be present for each Audit Code advised.
MOVEMENT NUMBER	M	
MOVEMENT TYPE	M	
NETT INSTALMENT SETT CURRENCY	C	Present for deferred items only.
NETT PREMIUM SETT CURRENCY	M	
NON MARINE AUDIT CODE	C	May be present if the Year Account is 1990 or earlier.
ORI FURTHER NARRATIVE	C	Present if a policy record and/or further narrative has been advised by the Broker. NB If a policy record has been advised the last line of ORI further narrative will state 'A POLICY RECORD EXISTS FOR THIS ITEM'.
PERCENT CEDED TO DTI APPROVED COMPANIES	C	
PERCENTAGE CEDED TO LLOYD'S	M	

PERIOD OF POLICY FROM DATE	C	Present if advised by the Broker.
PERIOD OF POLICY NARRATIVE	C	Present if advised by the Broker.
PERIOD OF POLICY TO DATE	C	Present if advised by the Broker.
PLANNED INSTALMENT DUE DATE	C	Present for deferred items only.
PLANNED SETTLEMENT DATE	C	Present if advised by the Broker.
REINSURANCE EXCESS DETAILS	C	Present if advised by the Broker.
REINSURER COMPANY/SYND ID	M	Will be present if the Reinsuring Market details have been advised by the Broker.
REINSURER COMPANY/SYND NAME	C	Will be present if the Reinsuring Market details have been advised by the Broker.
REINSURER COMPANY/SYND STATUS CODE	M	Will be present if the Reinsuring Market details have been advised by the Broker.
REINSURER OUTSTANDING AMOUNT	C	Present if advised by the Broker as part of the reinsuring market details.
REINSURER PAID AMOUNT	C	Present if advised by the Broker as part of the reinsuring market details.
REINSURER TYPE	C	Present if advised by the Broker as part of the Reinsuring Market details.
RISK CODE	C	Present if the Year Account is 1991 or later.
SETTLEMENT CURRENCY	M	
SUPPLEMENTARY DOCUMENT IND	C	Present if advised by the Broker.
TAX CODE	C	Present if appropriate to the transaction (e.g. if item is for Canadian dollars).
TOTAL AMOUNT DUE	C	Present if advised by the Broker.
TOTAL AMOUNT OUTSTANDING	C	Present if advised by the Broker.
TOTAL COMPANY SYND PERCENTAGE	M	
TRANSACTION REFERENCE	M	
TREATY EXCESS OF LOSS IND	C	Present if appropriate for the Tax Code that has been advised.
UNIQUE CLAIM REFERENCE	C	Present if advised by the Broker.

UNIQUE MARKET REFERENCE	M	
VOYAGE LOCATION	C	Present if advised by the Broker.
YEAR OF ACCOUNT	C	

6. EXAMPLE MESSAGE

DXC has generated an interchange that contains two LIMRIA messages. The first message contains a group of two new, non-composite, non-deferred, credit/debit items, which have the same Unique Market Reference. The second message contains a replacement for a deferred item.

UNB INTERCHANGE HEADER

```
UNH MESSAGE HEADER
  GIS MOVEMENT TYPE
  RFF UNIQUE MARKET REFERENCE
  RFF GROUP REFERENCE
  NAD BROKER NUMBER
  RFF TRANSACTION REFERENCE
  CUX SETTLEMENT CURRENCY
  GIS ENTRY TYPE
  GIS AUDIT DTI CODE
  GIS RISK CODE
  RFF LLOYDS ITEM NUMBER
  RFF MOVEMENT NUMBER
  RFF BROKER REFERENCE 1
  RFF BUREAU UNIQUE REFERENCE
  RFF BUREAU UNIQUE REFERENCE VERSION
  DTM YEAR OF ACCOUNT
  DTM PLANNED SETTLEMENT DATE
  PCD TOTAL COMPANY/SYNDICATE PERCENTAGE
  PCD PERCENTAGE CEDED TO LLOYD'S
  NAD COMPANY/SYNDICATE IDENTIFICATION
  RFF LINE NUMBER
  RFF COMPANY SYND REFERENCE
  MOA COMPANY SYND NET PREM SETT CCY
  PCD COMPANY SYND PERCENTAGE
  MOA NETT PREMIUM SETTLEMENT CCY
  NAD LEAD SYNDICATE IDENTIFICATION
  NAD INSURED RETROCESSIONAIRE
  CTA BROKER CONTACT
  BROKER CONTACT TELEPHONE NUMBER
  FTX VOYAGE/LOCATION
  FTX ORI FURTHER NARRATIVE
  NAD REINSURER COMPANY/SYND ID
  REINSURER COMPANY/SYND NAME
  RFF COLLECTION NOTE REFERENCE
  GIS REINSURER COMPANY/SYND STATUS CODE
  GIS REINSURER TYPE
  MOA REINSURER PAID AMOUNT
  NAD REINSURER COMPANY/SYND ID
  REINSURER COMPANY/SYND NAME
  RFF COLLECTION NOTE REFERENCE
  GIS REINSURER COMPANY/SYND STATUS CODE
  GIS REINSURER TYPE
  MOA REINSURER PAID AMOUNT
  RFF TRANSACTION REFERENCE
```


CUX SETTLEMENT CURRENCY
 GIS ENTRY TYPE
 GIS AUDIT DTI CODE

 GIS RISK CODE
 RFF LLOYDS ITEM NUMBER
 RFF MOVEMENT NUMBER
 RFF BROKER REFERENCE 1
 RFF BROKER REFERENCE 2
 RFF BUREAU UNIQUE REFERENCE
 RFF BUREAU UNIQUE REFERENCE VERSION
 DTM YEAR ACCOUNT
 PCD TOTAL COMPANY/SYNDICATE PERCENTAGE
 PCD PERCENTAGE CEDED TO LLOYDS
 NAD COMPANY/SYNDICATE IDENTIFICATION
 RFF LINE NUMBER
 RFF COMPANY SYND REFERENCE
 MOA COMPANY SYND NET PREM SETT CCY
 PCD COMPANY SYND PERCENTAGE
 MOA NETT PREMIUM SETTLEMENT CCY
 NAD LEAD SYNDICATE IDENTIFICATION
 NAD INSURED RETROCESSIONAIRE
 CTA BROKER CONTACT
 BROKER CONTACT TELEPHONE NUMBER
 FTX VOYAGE/LOCATION
 FTX ORI FURTHER NARRATIVE
 UNT MESSAGE TRAILER
 UNH MESSAGE HEADER
 GIS MOVEMENT TYPE
 RFF UNIQUE MARKET REFERENCE
 NAD BROKER NUMBER
 RFF TRANSACTION REFERENCE
 CUX SETTLEMENT CURRENCY
 GIS ENTRY TYPE
 GIS AUDIT DTI CODE
 GIS MARINE AUDIT CODE
 NAD MARKET LEADER IDENTIFICATION
 GIS INSTALMENT TYPE
 GIS TAX CODE
 RFF LLOYDS ITEM NUMBER
 RFF MOVEMENT NUMBER
 RFF BUREAU SIGNING REFERENCE
 RFF BROKER REFERENCE 1
 RFF BROKER REFERENCE 2
 RFF BUREAU UNIQUE REFERENCE
 RFF BUREAU UNIQUE REFERENCE VERSION
 DTM YEAR ACCOUNT
 DTM PERIOD OF POLICY FROM
 DTM PERIOD OF POLICY TO
 PCD TOTAL COMPANY/SYNDICATE PERCENTAGE
 PCD PERCENTAGE CEDED TO LLOYDS
 NAD COMPANY/SYNDICATE IDENTIFICATION

RFF	LINE NUMBER	
		RFF COMPANY SYND REFERENCE
		MOA COMPANY SYND NET PREM SETT CCY
		PCD COMPANY SYND PERCENTAGE
	MOA	NETT PREMIUM SETTLEMENT CCY
	MOA	TOTAL AMOUNT DUE
	MOA	TOTAL AMOUNT OUTSTANDING
	NAD	LEAD SYNDICATE IDENTIFICATION
	CTA	BROKER CONTACT
		BROKER CONTACT TELEPHONE NUMBER
	FTX	ORI FURTHER NARRATIVE
	FTX	ORI FURTHER NARRATIVE
	FTX	ORI FURTHER NARRATIVE
	FTX	ORI FURTHER NARRATIVE
		DTM PLANNED INSTALMENT DUE DATE
		RFF INSTALMENT NUMBER
		MOA NETT INSTALMENT SETT CCY
		DTM PLANNED INSTALMENT DUE DATE
		RFF INSTALMENT NUMBER
		MOA NETT INSTALMENT SETT CCY
		DTM PLANNED INSTALMENT DUE DATE
		RFF INSTALMENT NUMBER
		MOA NETT INSTALMENT SETT CCY
	UNT	MESSAGE TRAILER
UNZ		INTERCHANGE TRAILER